

PODSTM



Pipeline Open Data Standard
2011 USER CONFERENCE

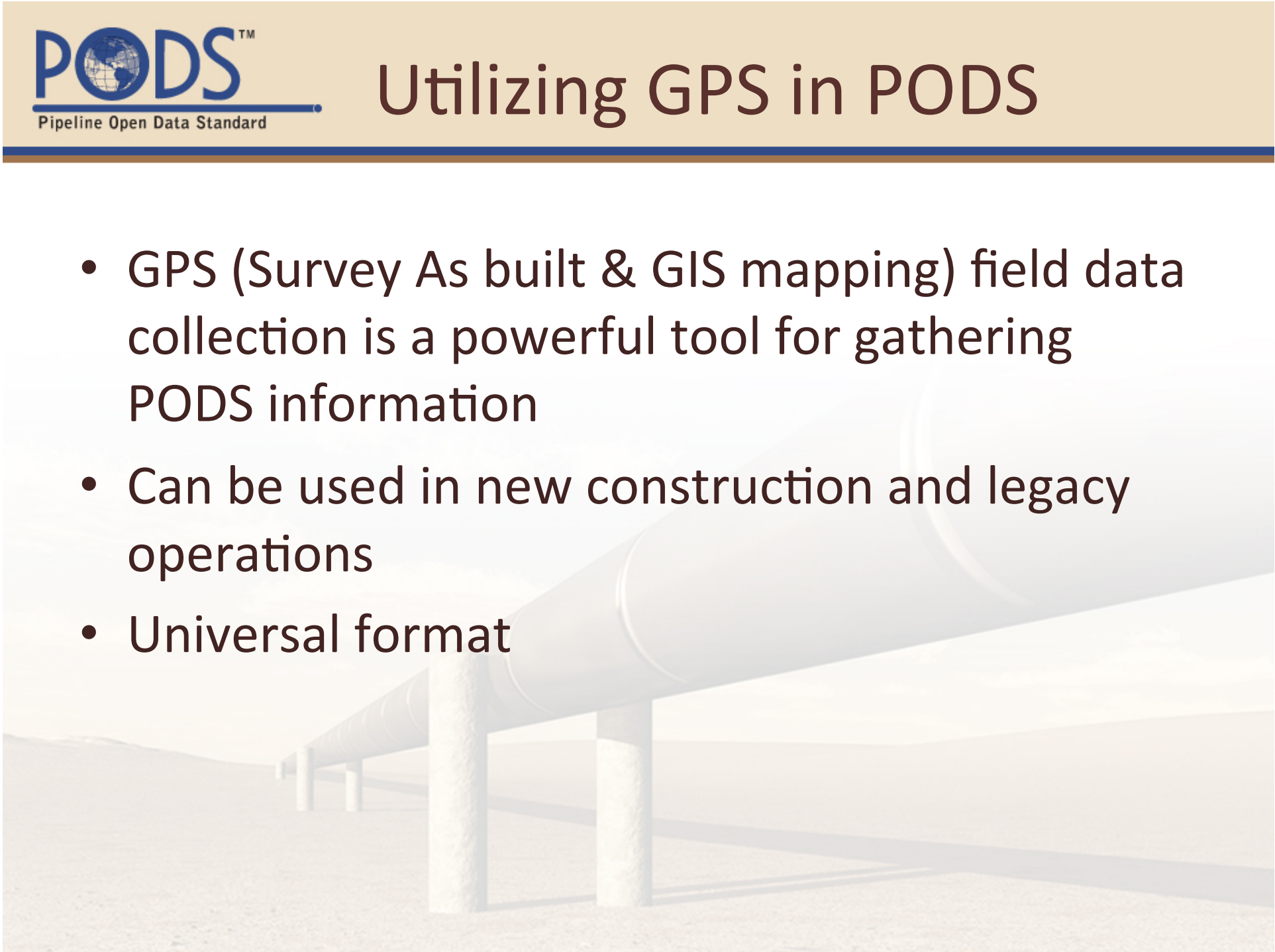
Leveraging GPS Data

By: Kevin Pomaski



Utilizing GPS in PODS

- GPS (Survey As built & GIS mapping) field data collection is a powerful tool for gathering PODS information
- Can be used in new construction and legacy operations
- Universal format



Issues with GPS in PODS

- GPS alone does not answer all data questions
- GPS attribute data is incomplete
- Convoluted workflows
- Delivery methods of GPS data
- QA/QC of information
- Time to identify missing information

GPS Solutions for PODS

- Have a defined schema for GPS from your PODS tables
- Identify best delivery method
- Extend the window of “touch” time with data
- Leverage resources to complete the missing data
- Communicate with other departments the “questions” you need answered.

- Refined data collection standards
- A real time visual of GPS data collection
- QA/QC Automation
- PODS centric GPS applications
- Next generation GPS data loaders
- “Near-Built” construction surveys
- Table Structure to accept collected data

Joined GPS to Materials

24 hours after pipe was placed on R.O.W

